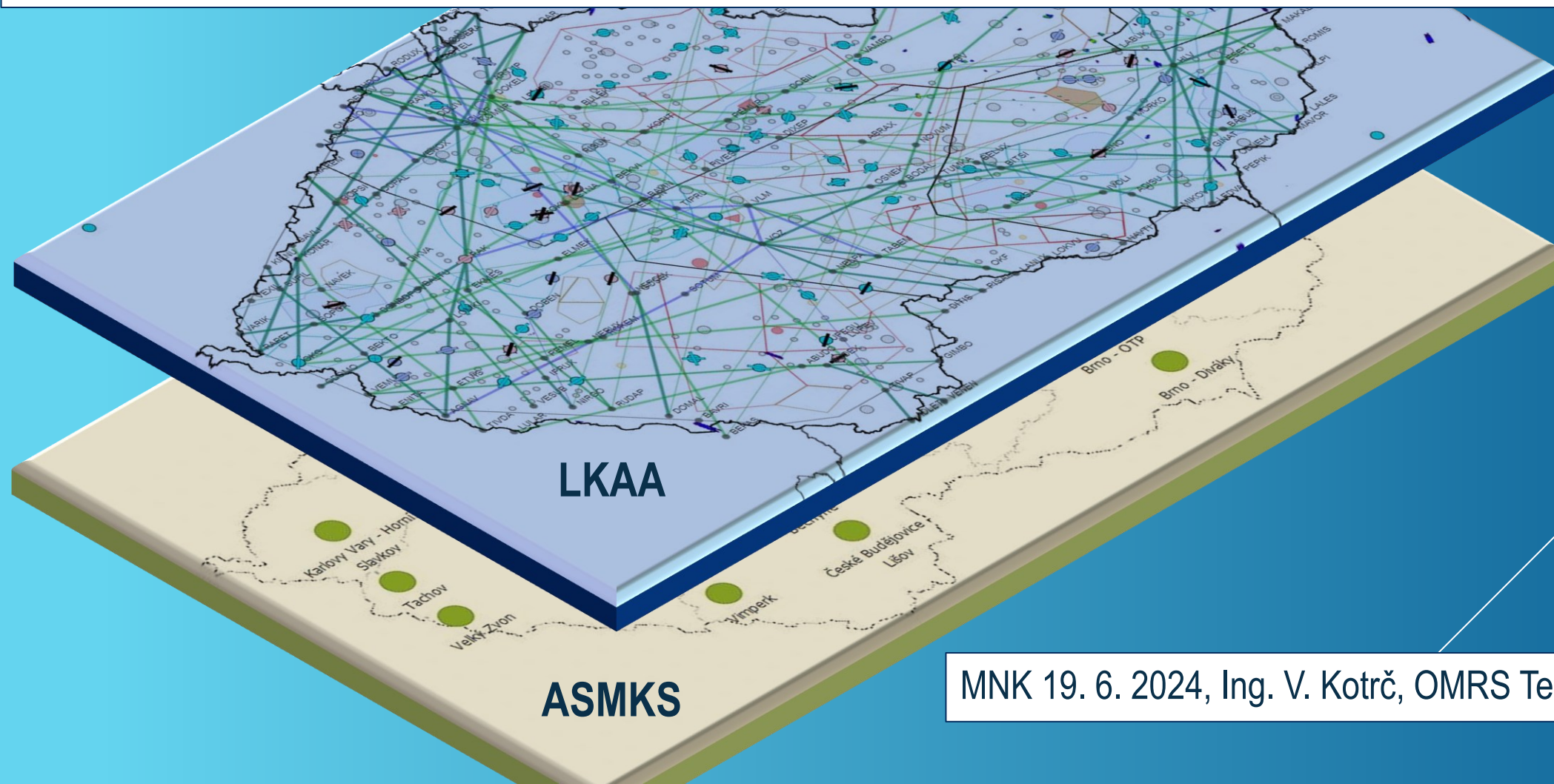
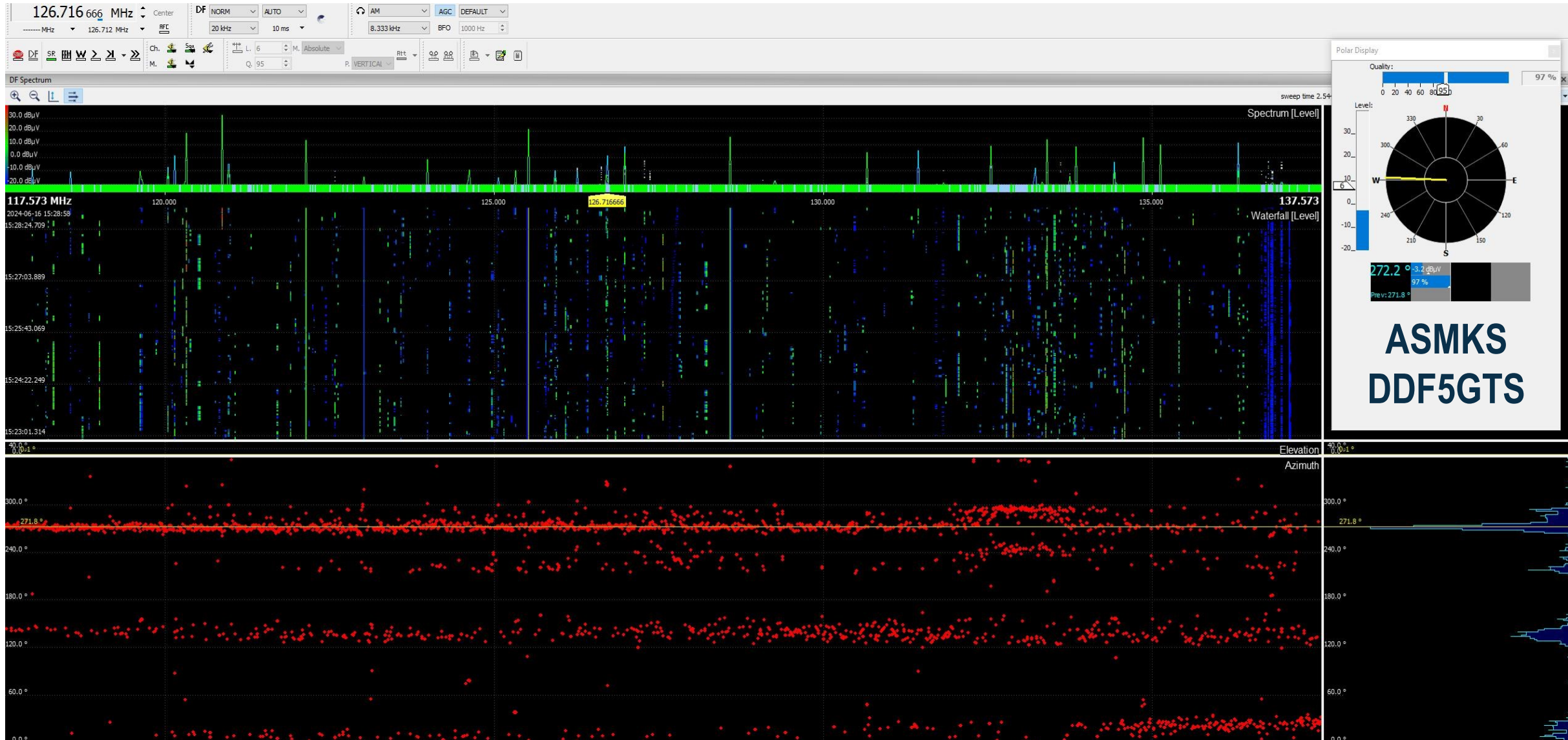


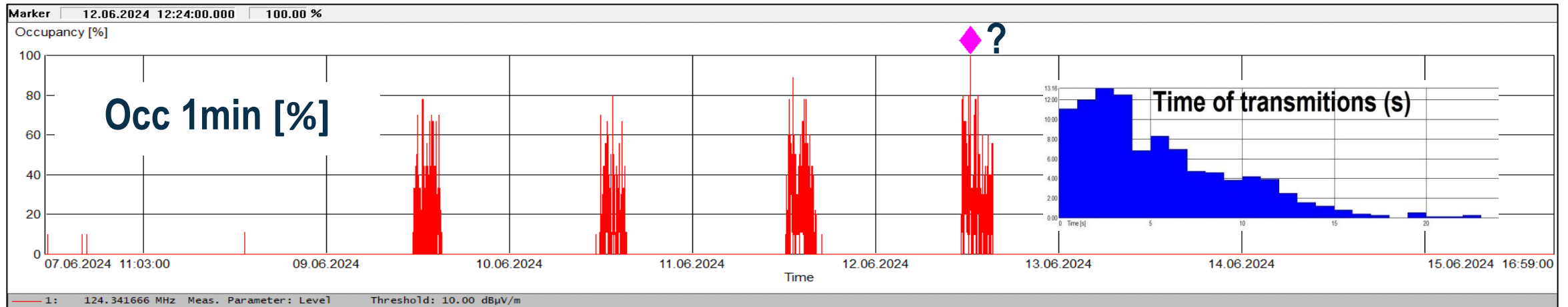
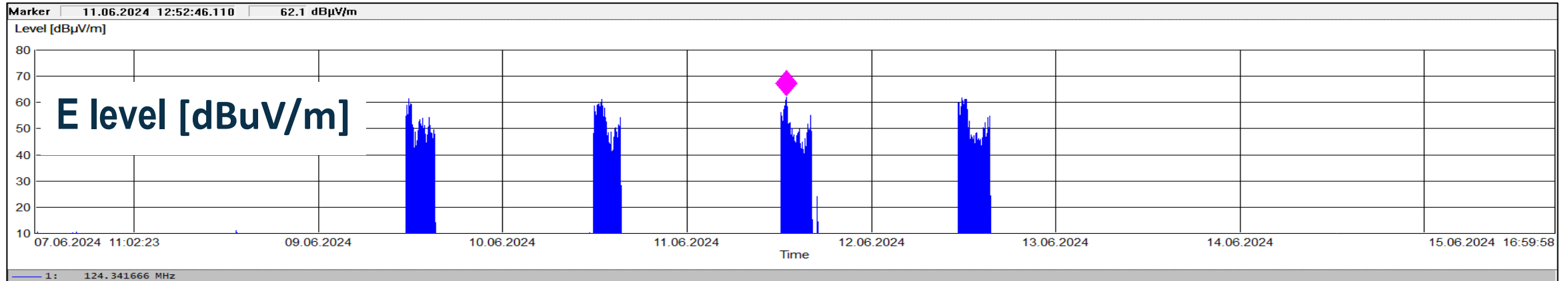
# ČTÚ (OMRS Tehov/Karlovice) aktuálně k 118 - 137 MHz



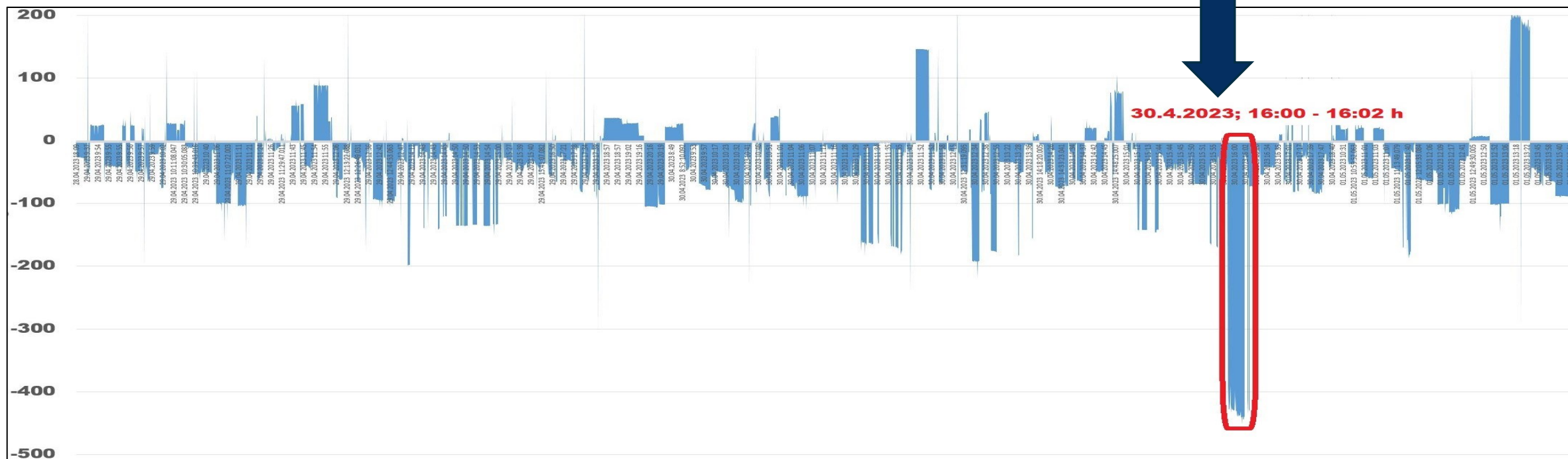
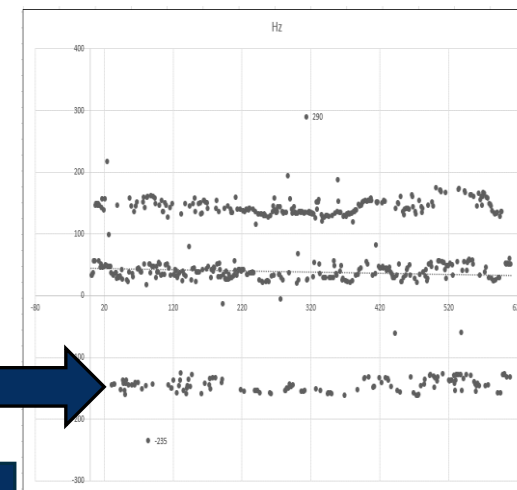
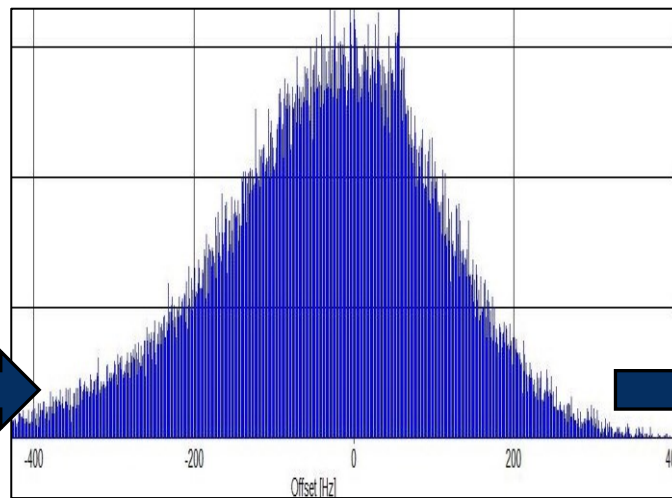
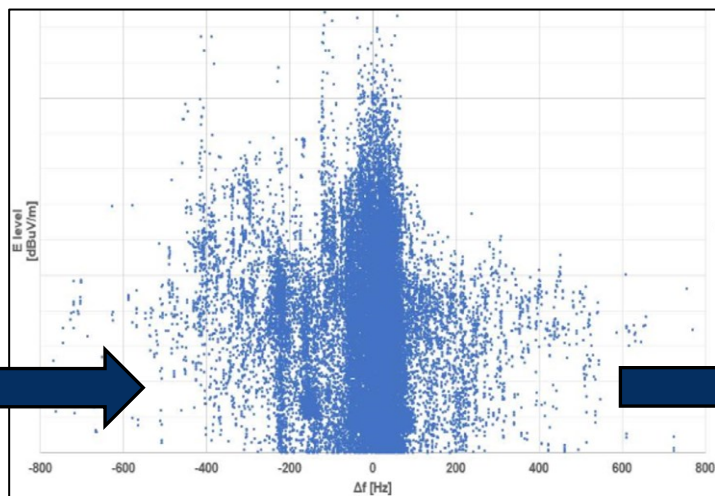
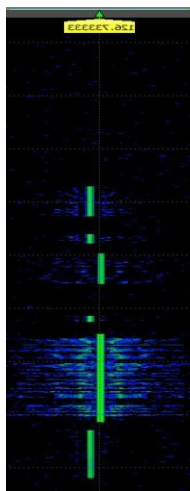
# Panoramatický on-line scanning 118 - 137 MHz step 8,33 kHz s možností DDF:



Automatizovaná měření úrovní provozních signálů, obsazenosti kanálů, kmitočtové offsety stanic, popř. další ...



# Kmitočtový offset (Hz) letadlových (palubních) stanic detailněji :



# Osvěta: Bezrozměrný ICAO kanál 8,33 kHz $\neq$ kmitočet v MHz



Display kód		Kmitočet [MHz]
8.33 kHz	25 kHz	
1**.*05	1**.*00	1**.*00000
1**.*10		1**.*08333
1**.*15		1**.*16666
1**.*30	1**.*25	1**.*25000
1**.*35		1**.*33333
1**.*40		1**.*41666
1**.*55	1**.*50	1**.*50000
1**.*60		1**.*58000
1**.*65		1**.*66666
1**.*80	1**.*75	1**.*75000
1**.*85		1**.*83333
1**.*90		1**.*91666